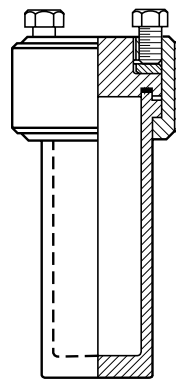


Series Number:

**4750**Type:  
**General Purpose**Mounting Style:  
**Moveable**Vessel Sizes, mL:  
**125 & 200**Standard Pressure  
MAWP Rating, psi (bar):  
**3000 (200)**Maximum Operating  
Temp., °C:  
**350**

## Series 4750 General Purpose Pressure Vessels, 125 & 200 mL

**General Purpose 4750 Series Vessels** are available in volumes of 125 and 200 mL, with temperatures up to 350 °C and maximum pressure of 3000 psi (200 bar). They come standard with a Split Ring closure with 6 compression bolts, and a choice of three different head styles: 1/8" NPT w/plug, an "A" Socket, or an "A" Socket with Thermocouple. The maximum amount of openings for this head style is two and would be dependent on the size of the ports and the type of fittings required. For the 4750 Series General Purpose Vessels, Parr offers the 4921 Ceramic Fiber Heater.

**4750 Cross Section****Model 4750-200mL-A  
Vessel, with 4310 Gage  
Block Assembly.**

### Series 4750 Pressure Vessel Specifications

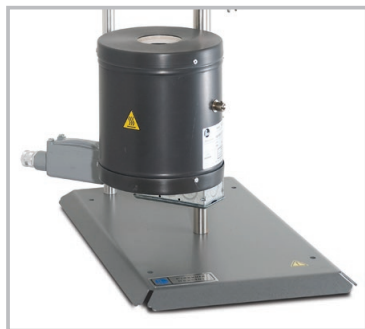
Shaded bar indicates specifications that change within series.

Model Number	4750	
Approximate Volume, mL	125	200
Maximum Pressure (MAWP)	3000 psi (207 bar, 200 bar for CE orders)	
Maximum Temperature	350 °C	
<b>Vessel Style</b>		
Head Style	Moveable	
Closure	Split-Ring (6 Compression Bolts)	
Head Seal	Flat Gasket - PTFE	
Head Opening Options	One head opening (1/8" NPT, 1/4" NPT, "A" socket, or rupture disc assembly port) Two head openings ("A" socket and 1/8" NPT or two 1/8" NPT) Custom port option (Contact our technical sales department to discuss options)	
Maximum Head Openings	2	
Temperature Measurement (optional)	Fixed Thermocouple (Thermowell for special alloys)	
<b>Stand and Heater (optional)</b>		
Stand Type	Bench Top Stand with Heater	
Heater Style	Ceramic Fiber	
Head Style	700	
Head Style	6 / 3	
<b>Weight and Dimensions</b>		
Cylinder I.D. x Depth, inches	1.5 x 4.4	1.5 x 6.9
Vessel Assembly Weight, pounds*	4.4	5
Cylinder Weight, pounds	1.7	2.4
*Vessel weight is based on a moveable head vessel with a "A" socket and 1/8" NPT port. Vessel weight will vary based on head configuration choice and fitting options.		
Other options available. See Ordering Guide, visit <a href="http://www.parrinst.com">www.parrinst.com</a> , or call for more information.		

# Series 4750 Ordering Guide



Model 4750-125mL-A Vessel, with 4310 Gage Block Assembly.



Available stand assembly with heater

An example order number for a vessel in this series is:  
**4750-125mL-T-SS-A-21AC4-A22AC3**

A composite identification number to be used when ordering a 4750 Series Pressure Vessel System can be developed by combining individual symbols from the separate sections below. For more information on how to use this ordering guide, [please see page 27](#).

A Vessel Volume	
-125mL	125 mL, 1" ID
-200mL	200 mL, 1" ID

B Gasket / Maximum Temperature	
-T	PTFE Gasket, 350 °C
-FG	Flexible Graphite Flat Gasket, 500-538 °C

C Materials of Construction	
-SS	T316 Stainless Steel
-C20	Alloy 20
-MO	Alloy 400
-IN600	Alloy 600
-IN625	Alloy 625
-HB	Alloy B-2 / B-3
-HC	Alloy C-276
-NI	Nickel 200
-TI2	Titanium Grade 2
-TI4	Titanium Grade 4
-ZR702	Zirconium Grade 702
-ZR705	Zirconium Grade 705

See [page 10](#) or [24](#) for complete list of available alloys.

D Head Configuration	
-RD	Rupture disc port with rupture disc assembly & disc
-1/8	One head opening, 1/8" NPT port, plugged
-1/4	One head opening, 1/4" NPT port, plugged
-A	One head opening, "A" socket
-A & 1/8	Two head openings, "A" socket & 1/8" NPT w/ thermocouple
-(2)1/8	Two head openings, (2) 1/8" NPTF(s) w/ plug and w/ thermocouple
-NS	Non-standard, custom head opening

E Optional Fittings & Custom Options (Check all needed)	
-4310A	Gage block assembly (for head with "A" socket opening)
-TC	Thermocouple (requires 1/8" NPT opening)

F Pressure Gage Option (Gage Block Assembly Required)	
-No Symbol	None
-3000	3000 psi / 207 bar
-2000	2000 psi / 138 bar
-1000	1000 psi / 69 bar
-600	600 psi / 40 bar
-200	200 psi / 14 bar
-100	100 psi / 7 bar

G Stand with Heater Options	
-No Symbol	None
-BTS	Bench Top Stand w/ Heater

H Controller	
-No Symbol	None
-4838	PID Control, Ramp & Soak Programming, and Data logging with Software (RS-485 to USB cable not included). For use with one additional display module.
-4848	PID Control, Ramp & Soak Programming, and Data logging with Software. (RS-485 to USB cable not included). For use with up to three additional display modules.

See [Chapter 6](#) for complete list of Controller options.

I Controller Options (Check all needed)	
-PDM	Pressure Display Module
-HTM	High Temperature Cut Off Module
-ETLM	External Temperature Limit Module
-SVM	Solenoid Valve Module (for cooling control)
-A1925E4	RS-485 to USB Cable for 4838/4848 Controller (required for data logging)
-A1925E6	RS-485 to USB Converter, isolated, 30-ft
-A2208E	RS-485 Daisy Chain for Multiple Controllers (Must be used with A1925E6)
-A3504HC	SpecView Software Package for 4838/4848 Controller

J Electrical Supply for Heater and/or Controller	
-No Symbol	None
-115	115V Power
-230	230V Power

K Certifications	
-ASME	ASME Documentation
-CE	CE Documentation
-P	Parr Certification

Please note that all options and combinations are not compatible with all models.